

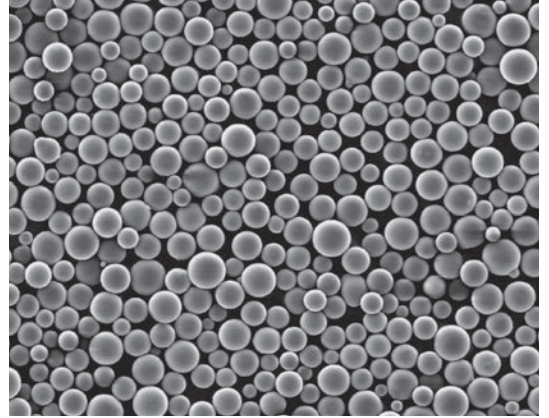
Negative CTE Filler

The volume of the Negative CTE* Filler becomes smaller as temperatures rise. This makes it effective for reduction of the thermal expansion of the resin composite. Its spherical shape contributes to its excellent resin filling status.

*CTE: coefficient of thermal expansion

Features

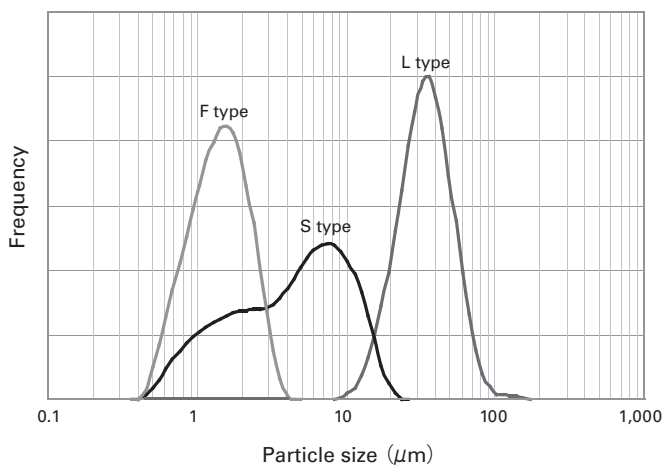
- Negative CTE
- Water resistance
- Small particle size
- Electric insulation



Properties

Glass Code		DL-7400	
Coefficient of thermal expansion	25-150°C	ppm/K	-1.1
	150-240°C		-0.9
Density		$\times 10^3 \text{kg/m}^3$	2.5

Particle Distribution



※Other sizes are also available.

CTE of Resin Composite

